



**PRO  
CONTAIN**

PORTABLE BUILDINGS

FIRST CHOICE FOR MOBILE  
**BUILDING SOLUTIONS**



# ORIGINAL QUALITY

ProContain –  
convincing container construction

And this has been so for a long time: it was in 1968 that our parent company, ALHO, started to build construction trailers in a different way. Frames made of steel and panels made of galvanised sectional steel sheets instead of timber. Shortly afterwards, ALHO began to build modular buildings. This is what makes our company the quality original. Today, our portfolio comprises office and construction-site buildings, dormitories, schools and pre-school nurseries and other modular buildings.

**PRO  
CONTAIN**  
CONTAINERSYSTEME

Ihre Flexibilität  
ist unser Standard



## ProContain

ORIGINAL QUALITY



## ProEco

THE ECONOMICAL  
SOLUTION



## ProBasic

THE INDIVIDUAL  
SOLUTION



## ProEnergy

THE ENERGY-EFFICIENT  
SOLUTION



## Furnishings

ADVANTAGES & CHOICES





# HOW YOU BENEFIT FROM OUR QUALITY

## FLEXIBLE

Individual design,  
flexibly usable and extendable,  
convertible and removable



## DURABLE

High-quality materials,  
careful workmanship,  
stable construction



## SUSTAINABLE

Endurable,  
long-term use,  
ideal price-performance ratio



# PROCONTAIN

## THE MODULAR CONSTRUCTION SPECIALIST

As a specialist within the ALHO Group, we focus upon the production of high-quality portable building solutions – from plain standard containers to complex buildings. The quality guarantee “made in Germany” always applies: production takes place in Coswig, Saxony, and Morsbach, North Rhine – Westphalia, and is subject to strict quality standards.

ProContain has a staff of more than 200 (production, sales, service and admin), who support specialist traders and rental companies. We use materials that leave no or only a small carbon footprint. After all, we want to protect the environment and users and residents’ health!

# OUR PROMISE

## UNCOMPROMISING QUALITY AND SAFETY

You can always rely ProContain’s quality. Our high production standards guarantee utter robustness, durability and a sustainable value. Careful workmanship, strict tests and quality inspections on our part make our products perfect and guarantee your contentment.

Official audit certificates attest our full compliance with all pertinent safety, fire protection, health, environmental protection and energy efficiency regulations.







# ProEco

## THE ECONOMICAL SOLUTION

ProEco sets new standards in terms of price and performance. The highly stable, welded steel frame and the use of galvanised materials ensure a long service life and corrosion resistance.

The wide range of standard types allows for individual combinations – simple or complex or anywhere in between. You can choose between various window variants. The very light window and door sandwich elements can be removed or exchanged, just as you want. You will only need one assembler.



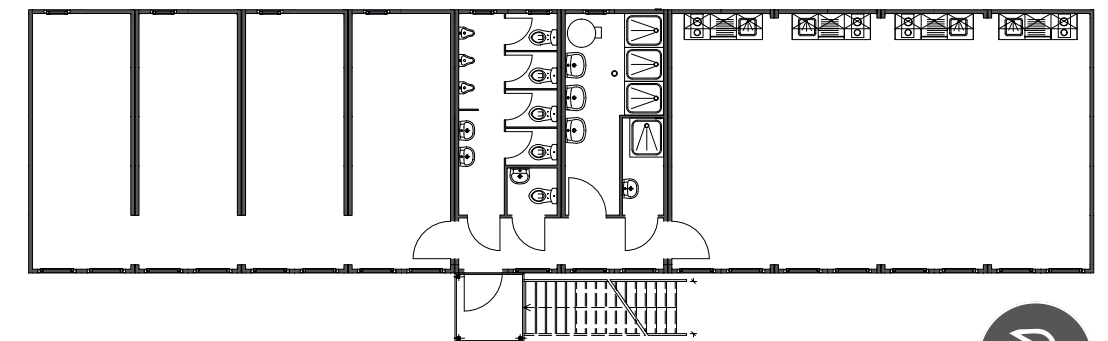
### DETAILS

- Temporary solution
- For construction-site accommodation buildings, construction-site offices, sanitary modular buildings or in case of renovations or refurbishments

### ADVANTAGES

- Available in various lengths and widths
- A perfect cost-benefit ratio
- Type-tested structural engineering calculations for up to three floors
- Exchangeable wall elements
- Galvanised steel-frame construction

### SAMPLE GROUND PLAN



### ProFlatPack

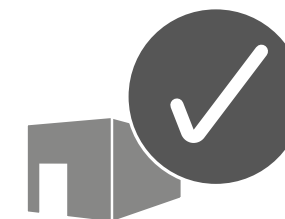
A collapsible, easy-to-transport ProEco variant is also available!

For more information, please visit [www.procontain.com](http://www.procontain.com)



For further pictures, designs and ground plans, please check out [www.procontain.com/en/products/proeco](http://www.procontain.com/en/products/proeco)





# ProBasic

## THE INDIVIDUAL SOLUTION

Next to each other, back-to-back, on top of each other: our ProBasic series is for short-term solutions lasting up to 24 months and can be geared to what you need. The ProBasic portable buildings' different sizes and large-scale windows make for lavish and well-lit rooms.

There are many furnishings, an exchangeable wall system and extensive fire and noise protection options available. Make use of this to turn your plans into reality!



HIGH-QUALITY  
**VERSATILE**  
RELIABLE



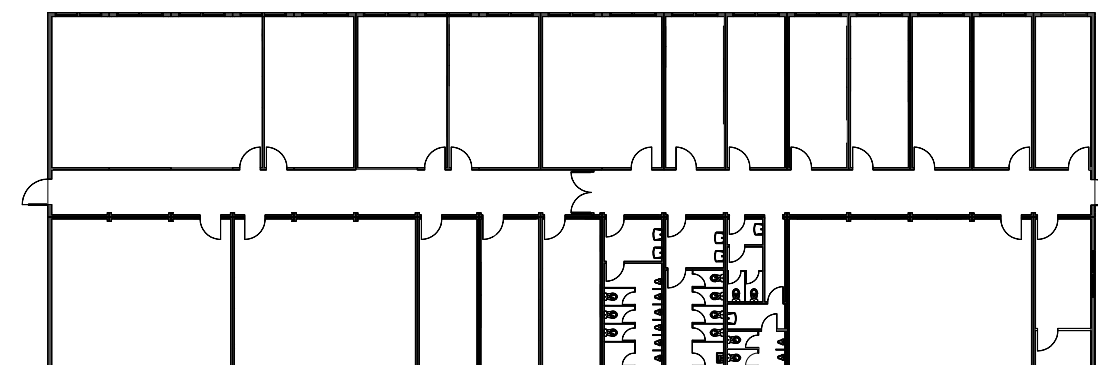
### DETAILS

- Medium-term solution for up to 24 months
- For offices, schools, pre-school nurseries or in case of renovations or refurbishments

### ADVANTAGES

- Various lengths, widths and heights
- Type-tested structural engineering calculations for up to three floors
- Various heating and A/C options

### SAMPLE GROUND PLAN



For further pictures, designs and ground plans, please check out [www.procontain.com/en/products/probasic](http://www.procontain.com/en/products/probasic)







ENERGY-EFFICIENT  
COMFORTABLE  
DURABLE



# ProEnergy

## THE ENERGY-EFFICIENT SOLUTION

The ProEnergy series provides a solution for a period of use longer than 24 months, and with real value added: energy efficiency and low operating costs. These play an ever more important role – whether for offices, admin buildings, schools, pre-school nurseries or welfare facilities.

ProEnergy meets the German Energy Saving Ordinance (EnEV) 2014 where applicable to standing times of more than 24 months. These portable buildings can be fitted with equipment using regenerative energy sources and thus comply with the German Erneuerbare-Energien-Wärmegesetz (Renewable Energies Heat Act; EEWärmeG). If you want, we will issue an energy performance certificate (Energieausweis) for your ProEnergy building.

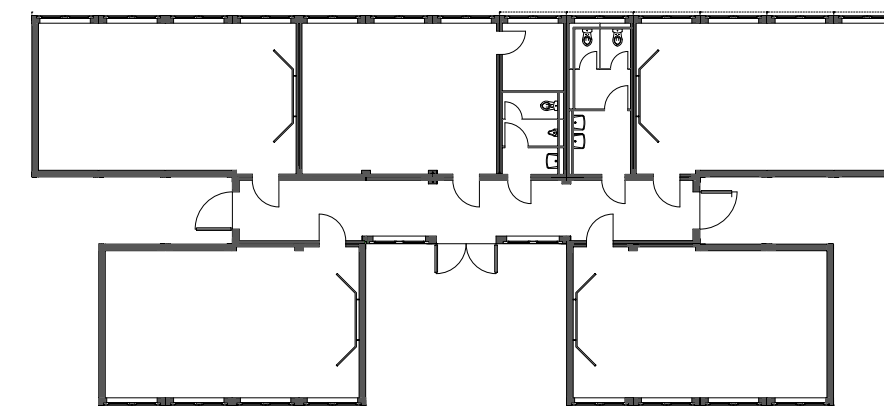
### DETAILS

- A permanent solution for more than 24 months
- For office and admin buildings, schools, pre-school nurseries
- As a new building, annexe, an extra floor

### ADVANTAGES

- Extra energy-efficient
- Various lengths, widths and heights
- Type-tested structural engineering calculations for up to three floors
- Various heating and A/C options

### SAMPLE GROUND PLAN



For further pictures, designs and ground plans, please check out [www.procontain.com/en/products/proenergy](http://www.procontain.com/en/products/proenergy)



# ProEco

## ADVANTAGES AND FURNISHINGS



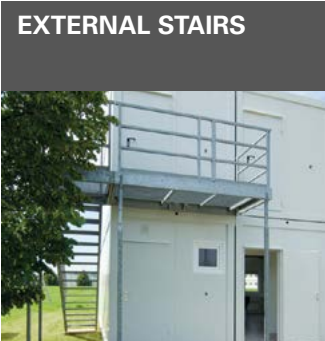
- Available in various lengths and widths
- A perfect cost-benefit ratio
- Type-tested structural engineering calculations for up to three floors
- Exchangeable wall elements
- Galvanised steel frame



- High-quality plastic tilt-and-turn windows
- Insulation glazing and external roller shutters
- Large-scale windows



- Aluminium sandwich door
- Metal-sheet canopies



- Steel stairs with landings
- Arcade



- Sandwich walls with a PU core and a magnetic surface
- Exchangeable wall elements



- Fork-lift pockets made of rectangular profiles



- Internal and external connections for various situations



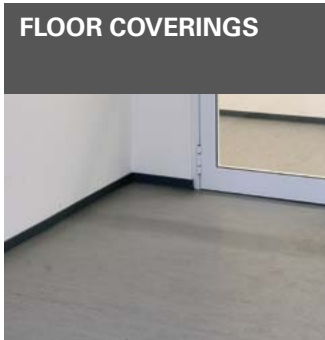
- Wooden interior doors



- Plastic-coated wooden chipboard
- Full-plastic panels



- Exchangeable sandwich walls or frame-work partitions



- Thermovlies
- PVC
- GRP (glass-fibre reinforced plastic)



- SPR, VDU work station lights
- Luminaires
- Switches and sockets
- Complete data channels



- Sanitary installations and toilets meet work place regulations
- Functionally equipped
- On-wall installations



- Split A/Cs
- Compact A/Cs
- Mobile A/Cs



- Window grille
- Door grille
- Bolts

# ProBasic

## ADVANTAGES AND FURNISHINGS



- Various lengths, widths and heights
- Available fire resistance ratings: F30 - F90 (inside - outside)
- Type-tested structural engineering calculations for up to three floors
- Central heating and gas heater possible



- Material strength 5/6 mm steel
- Fork-lift pockets
- Welded crane eyes



- High-quality plastic tilt-and-turn windows with aluminium roller shutters
- Insulation glazing
- Fully glazed tilt-and-turn elements
- External sun-blind



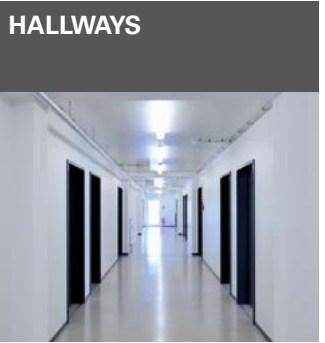
- Steel doors
- Aluminium canopy with glass covering
- Doors made of aluminium



- Steel stairs with landings
- External staircase
- Arcade



- Galvanised sectional sheets
- Steel frame with galvanised U sections
- Mineral insulation
- Plastic-coated wooden chipboard
- Exchangeable wall system



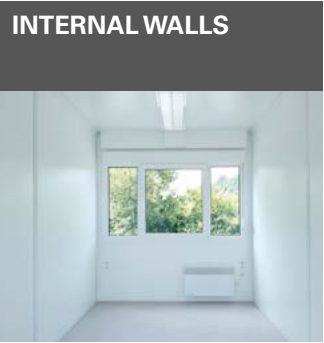
- Hallway and connection buildings



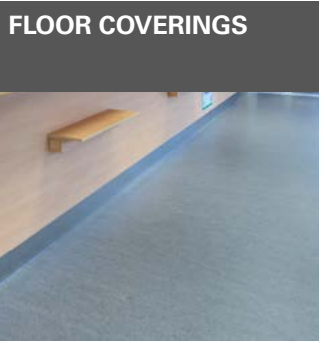
- Wooden interior doors
- Doors made of aluminium
- CPL-doors
- Fire protection doors
- Glass doors



- Plastic-coated wooden chipboard
- Open-plan coupling system
- Multi-layered gypsum
- Full-plastic panels



- Frame-work partitions
- Plastic-coated wooden chipboard
- Multi-layered gypsum wall
- Full-plastic panels



- PVC
- GRP
- Linoleum
- Carpet



- SPR, VDU work station lights
- LED
- Presence detectors
- Switches and sockets
- Complete data channels
- Central power distribution



- On-wall or in-wall installations
- Tiles
- High-quality branded fittings etc.
- Barrier-free and suitable for children



- Split A/Cs
- Compact A/Cs
- Mobile A/Cs



- Window grille
- Door grille
- Bolts



# ProEnergy

## ADVANTAGES AND FURNISHINGS



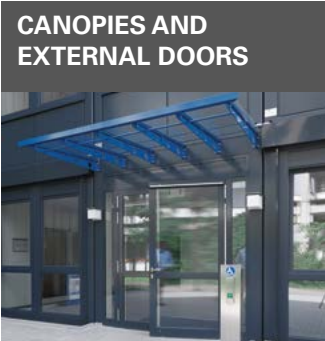
- For standing times of more than 24 months
- Extra energy-efficient
- Type-tested structural engineering calculations for up to three floors
- Various lengths, widths and heights
- Central hot water heating possible



- Sectional sheets
- Preparation for:
  - coffered sheets
  - timber facade
  - rendering
  - textile facade
  - full-glass elements



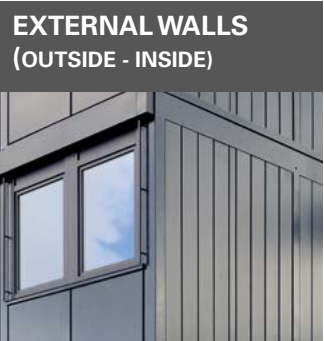
- High-quality plastic tilt-and-turn windows with aluminium roller shutters
- Insulation glazing
- Fully glazed tilt-and-turn elements
- External sun-blind



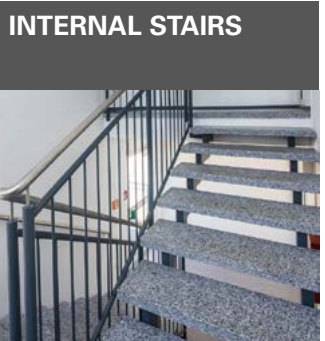
- Steel doors
- Aluminium canopy with glass covering
- Doors made of aluminium



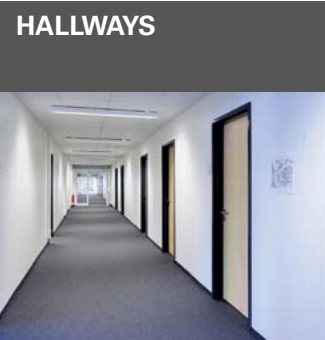
- Steel stairs with landings
- External staircase
- Arcade



- Galvanised sectional sheets
- Steel frame with galvanised U sections
- Mineral insulation
- Plastic-coated wooden chipboard



- Individual floor covering, rail and handrail



- Hallway and connection buildings



- Wooden interior doors
- Doors made of aluminium
- CPL-doors
- Fire protection doors
- Glass doors



- Plastic-coated wooden chipboard
- Open-plan coupling system
- Multi-layered gypsum ceiling
- Full-plastic panels



- Frame-work partitions
- Plastic-coated wooden chipboard
- Multi-layered gypsum wall
- Full-plastic panels



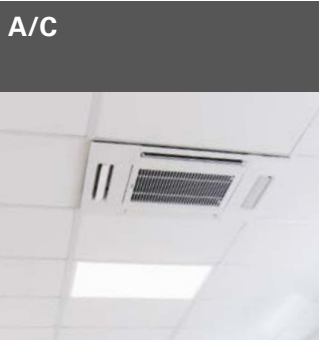
- PVC
- Tiles
- GRP
- Linoleum
- Carpet



- SPR, VDU work station lights
- LED
- Presence detectors
- In-wall switches and sockets
- Complete data channels
- Central power distribution



- On-wall or in-wall installations
- Tiles
- High-quality branded fittings etc.
- Barrier-free and suitable for children



- Wall-integrated A/Cs
- Split A/Cs





## OUR SERVICE

### SYSTEMATIC INDIVIDUALITY

You can always rely upon our quality “made in Germany”. Our consistently high production standards guarantee a maximum service life, value and flexibility.

## TECHNICAL DETAILS? REFERENCES?

We will furnish you with all the information you need to realise your plans.  
[info@procontain.com](mailto:info@procontain.com) | [www.procontain.com](http://www.procontain.com)



**ProContain GmbH**  
**Business premises Coswig**  
Köhlerstraße 1–3  
D-01640 Coswig bei Dresden  
Phone +49 (3523) 818-88  
Fax +49 (3523) 818-89

**ProContain GmbH**  
**Business premises Morsbach**  
Nordstraße 1  
D-51597 Morsbach  
Phone +49 (2294) 9930-400  
Fax +49 (2294) 9930-33400

**[info@procontain.com](mailto:info@procontain.com)**  
**[www.procontain.com](http://www.procontain.com)**

